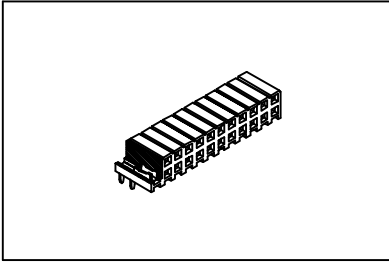


P.C.B. Socket 2.0mmX2.0mm(0.079”X0.079”)

GXCON



Material:

Housing: High temperature housing withstands IR and VPR soldering methods.

Contacts: Phosphor Bronze.

Plating: Gold plated over nickel.
Tin plated over nickel.

Electrical Characteristics:

Current Rating: 1 AMP.

Insulator Resistance: 5000MΩmin. at DC 500V.

Contact Resistance: 20mΩmax. at DC 100mA.

Operating Temperature: -65C ~+125C .

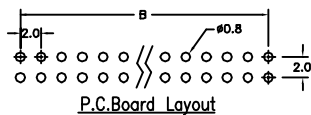
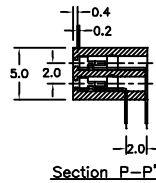
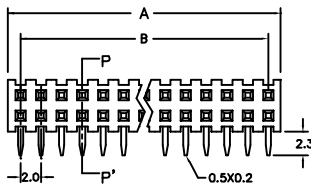
Mechanical Characteristics:

Insertion Force: 128g avg.(0.50mm sq. pin)

Withdrawal Force: 85g avg.(0.50mm sq. pin)

Features:

- * Double row.
- * Horizontal Entry.
- * Mates with 0.50mm(0.02”) square pin.



Position	4 Thru 80
Dimension	
A	2.0 X No. of Positions /2+0.5
B	2.0 X No. of Positions /2-2.0

Ordering information

PS12- 2 40 1 2
 Series Double Row No. of 1: Gold Plated 2: Horizontal Entry
 Pin Per Row 2: Tin Plated